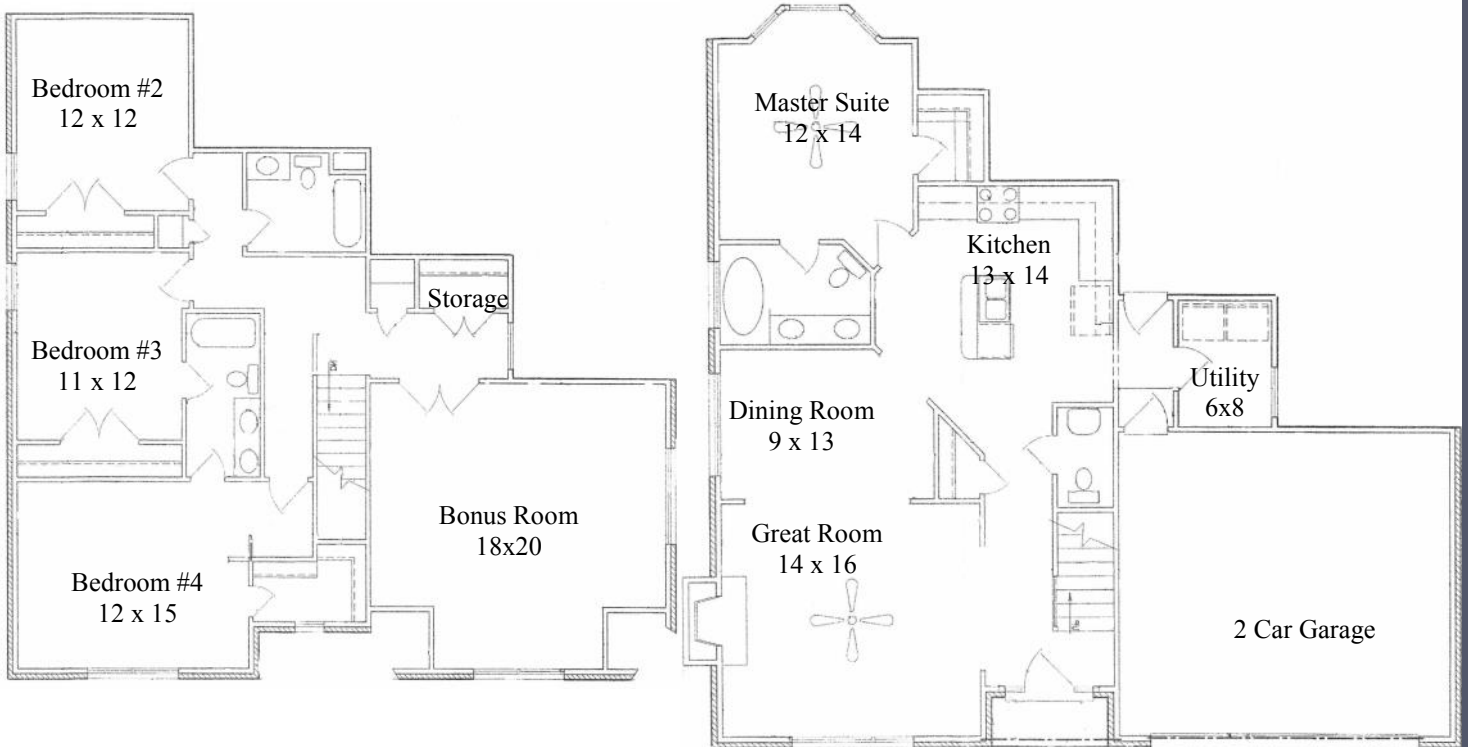


761 Bloomdale Trace ~ Lot 95

- **\$319,900**
- 2,372 Square Feet
- 4 Bedrooms, 3.5 Full Baths
- Master Bedroom on main level with bay window, walk-in closet, double bowl vanity
- 12 x 10 Kitchen w/ raised breakfast Bar— granite countertops, tile back-splash and stainless steel appliances opens to the Dining Room
- Greatroom w/ gas fireplace & vaulted ceiling
- Bedrooms 3 & 4 with shared bath
- Hardwood flooring in the Foyer, Dining



Illustrations of floorplan designs are artist renderings and are not intended to illustrate the finished product. Details will depend upon actual blueprint designs, builder specifications, and may vary depending on options selected.



*Universal Builders LLC is also known as Kinsmen Ventures, LLC, TENN TX LLC, & Wright Farms, LLC



Listing Agent
Margaret Dixon
615-754-8999

CRYE-LEIKE,
REALTORS®

All information deemed reliable, but not guaranteed and is Subject to change without notice



On-Site Agent
Pam Bodiford
615-812-9005